



Oxr1 Polyclonal Antibody

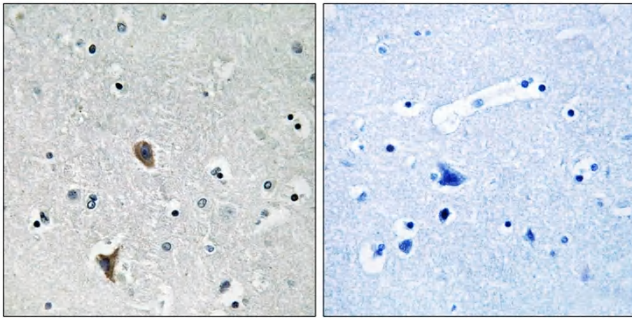
Catalog No	YP-Ab-02728
Isotype	IgG
Reactivity	Human;Mouse;Rat
Applications	WB;IHC;IF;ELISA
Gene Name	OXR1
Protein Name	Oxidation resistance protein 1
Immunogen	The antiserum was produced against synthesized peptide derived from human OXR1. AA range:472-521
Specificity	Oxr1 Polyclonal Antibody detects endogenous levels of Oxr1 protein.
Formulation	Liquid in PBS containing 50% glycerol, 0.5% BSA and 0.02% sodium azide.
Source	Polyclonal, Rabbit,IgG
Purification	The antibody was affinity-purified from rabbit antiserum by affinity-chromatography using epitope-specific immunogen.
Dilution	WB: 1/500 - 1/2000. IHC: 1/100 - 1/300. ELISA: 1/40000.. IF 1:50-200
Concentration	1 mg/ml
Purity	≥90%
Storage Stability	-20°C/1 year
Synonyms	OXR1; Nbla00307; Oxidation resistance protein 1
Observed Band	85kD
Cell Pathway	Mitochondrion .
Tissue Specificity	Cerebellum,Embryo,Epithelium,Lymph,Lymph node,Mammary gland,Neuroblastoma,Prostate,
Function	function:May be involved in protection from oxidative damage.,induction:By heat and oxidative stress.,PTM:Phosphorylated upon DNA damage, probably by ATM or ATR.,similarity:Belongs to the OXR1 family.,similarity:Contains 1 GRAM domain.,similarity:Contains 1 LysM repeat.,similarity:Contains 1 TLD domain.,
Background	function:May be involved in protection from oxidative damage.,induction:By heat and oxidative stress.,PTM:Phosphorylated upon DNA damage, probably by ATM or ATR.,similarity:Belongs to the OXR1 family.,similarity:Contains 1 GRAM domain.,similarity:Contains 1 LysM repeat.,similarity:Contains 1 TLD domain.,
matters needing attention	Avoid repeated freezing and thawing!



Usage suggestions

This product can be used in immunological reaction related experiments. For more information, please consult technical personnel.

Products Images



Immunohistochemistry analysis of paraffin-embedded human brain tissue, using OXR1 Antibody. The picture on the right is blocked with the synthesized peptide.